

Corby System 2 and Ethernet!

It is possible to route System 2 over Ethernet by utilizing an RS-232 to Ethernet Converter allowing you to do all your programming over with this setup including backing up and restoring your database!

The converter can be assigned an IP address within itself, as well as the subnet mask of your network. You can also assign the local port number you want to use, it defaults to port 10001, which is perfectly acceptable in most situations.

There are quite a few other options the converter has that we won't get into because it is not pertinent to this particular application. If you have any specific questions, please feel free to contact me at the following us by phone or email. We will be more than happy to answer your questions.

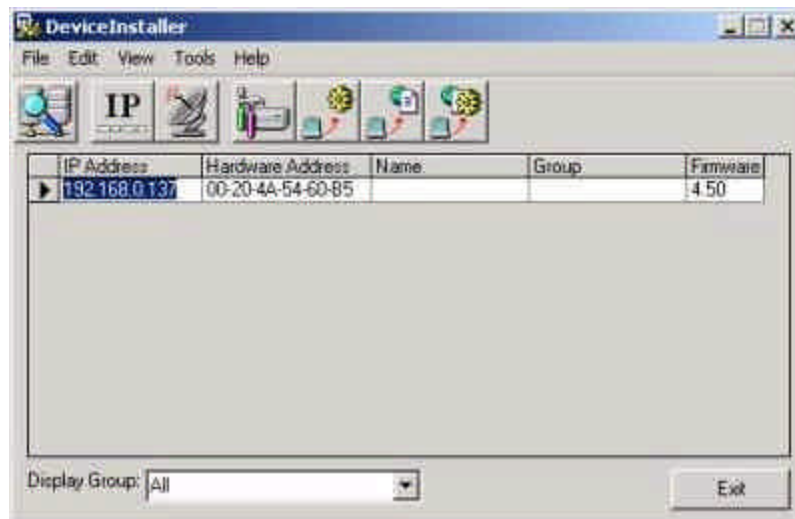
1-800-652-6729

<http://www.corby.com>

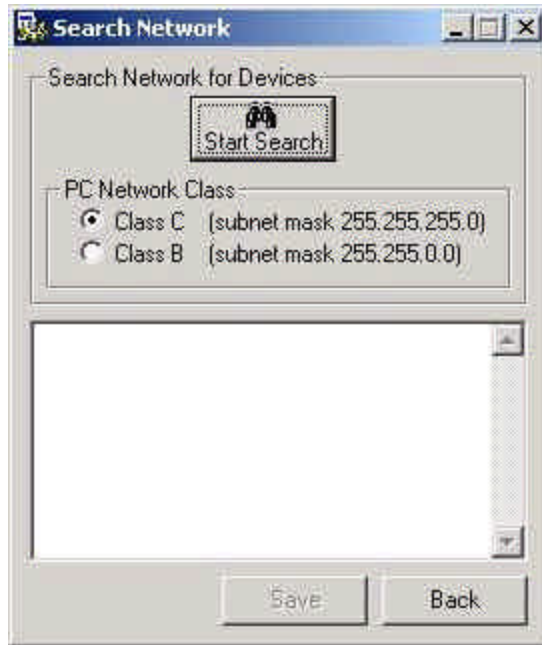
Have a great day!

How to set up the Converter

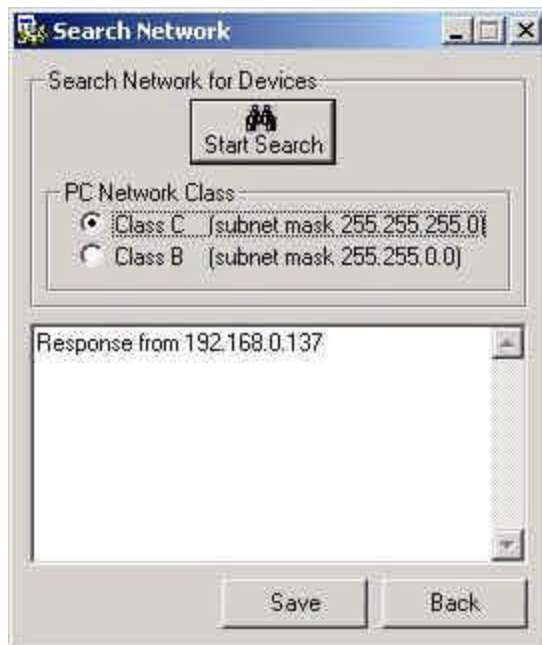
- 1 Install the Software that came with the device
- 2 Power the device up and plug it into the network
- 3 Run the Software
- 4 Select the icon with the magnifying lens over 2 computers
"Search the Network for devices"



- 5 Pick the subnet mask your companies network uses (Generally it's the Class C)
- 6 Click "Start Search"



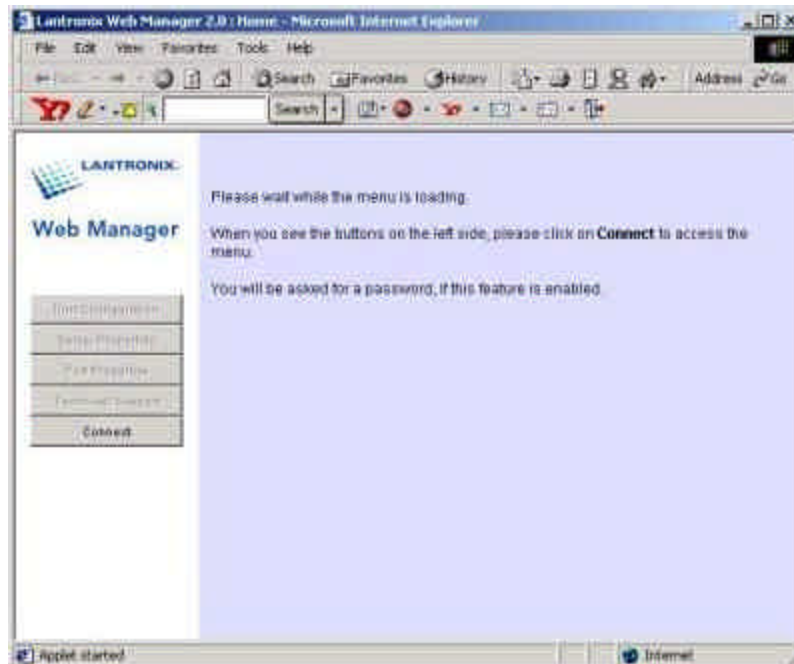
- 7 There should be a Response from 192.168.0.137 (May be different for you.)
Click "Save"



- 8 Click "Back"
- 9 Now Click the Satellite Dish Icon "Ping Devices"
There should be a response from the device
- 10 Click "Save"
- 11 Click "Back"
- 12 Click the "Tools" menu
- 13 Select "Device Manager"
- 14 Select "Web Configuration"



- 15 It should open a web browser window and load a web based configuration tool.



- 16 When the "Connect" Button becomes available, click it.
- 17 Under the "Serial Port Settings"
Make sure the settings are as follows

| | |
|-----------------|----------|
| Serial Protocol | = RS-232 |
| Speed | = 9600 |
| Character Size | = 8 |
| Parity | = None |
| Stop Bit | = 1 |
| Flow Control | = None |
- 18 Under "Dedicated Connection"
Remote IP and Remote Port should both have zeros in them.
Local port should be defaulted at "10001"
This is changeable to whatever your network needs.
- 19 Under "Additional Settings"
Disconnect Mode should be "Ignore DTR"
"Telnet Mode" should be enabled
- 20 Select the "Update Settings" Button
It will say that the unit is rebooting
- 21 When the Buttons come back
Close the Browser
Click cancel on the "Web Configuration Window"
Click back on the "Device Management" Window
- 22 Click "File"
"Exit" to close the software
- 23 The Device is now ready for use with the System 2.

